

# Castles

ASKING PRICE

**£225,000**

**Magpie Close**

Enfield, EN1 4JG   Leasehold

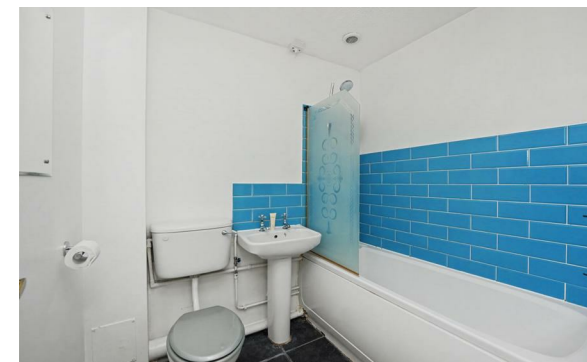


## PROPERTY SUMMARY

A modern 1 bedroom top floor purpose built flat located on a popular development off Hoe Lane within approximately 1 mile of Enfield Town shopping centre and Enfield Town and Turkey Street Train Stations. The property is offered for sale on a chain free basis and would suit a first time buyer or buy to let investment buyer. Viewing is highly recommended.

Features include:-

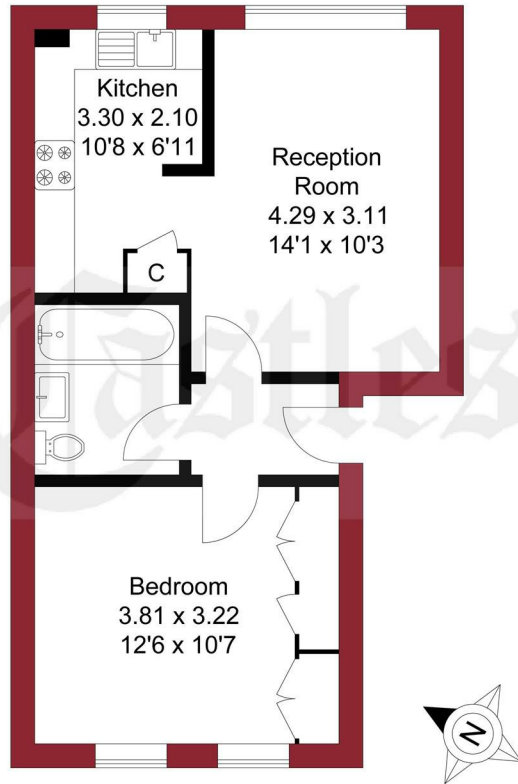
Long lease,  
Communal parking areas,  
Fitted kitchen,  
Double glazing,  
Security entryphone system,  
Ideal first time buy or buy to let







APPROXIMATE GROSS INTERNAL AREA  
39.50 sqm / 425.17 sqft



THIRD FLOOR

THIS PLAN IS FOR ILLUSTRATION ONLY AND MAY NOT BE  
REPRESENTATIVE OF THE PROPERTY

For a guide to the area  
please scan this code for  
more information



Flat Leasehold

**Council:** Enfield

**Council Tax Band:** C

**Lease Remaining:** 999 years from 01/01/2000

**Service Charge:** £87.93 pcm

**Ground Rent:** n/a

Agents Note: Whilst every care has been taken to prepare these particulars, they are for guidance purposes only. All measurements are approximate and are for general guidance purposes only and whilst every care has been taken to ensure their accuracy, they should not be relied upon and potential buyers/tenants are advised to recheck the measurements



#### OFFICE ADDRESS

243 - 245 Hertford Road  
Enfield  
London  
EN3 5JJ

#### OFFICE DETAILS

0208 804 8000  
enfield@castles.london  
<https://www.castles.london>

